

*Leeds Arts Centre
presents*

Blood & Ice

by

Liz Lochhead

The story of
the creation of
Frankenstein

Directed By Camilla Asher

*Carriageworks Theatre
Millennium Square, Leeds*

*Wednesday 18th -
Saturday 21st October, 7.45 pm*





LEEDS ARTS CENTRE was formed in 1945 as an amateur society to encourage and foster interest in the arts. Originally it comprised Drama groups - including Children's Theatre - a Fine Arts group and Musical, Literary and Film sections and was based in the Civic Theatre (now Leeds City Museum). Leeds Arts Centre moved to its new home at the Carriageworks in 2005. We are a friendly society, working together to maintain the high standard of its productions. We now present four plays every season, usually in February, March/April, May/June and October, at the Carriageworks Theatre under the umbrella of Leeds Community Arts Network.

'Green Room' events give members the opportunity to perform short plays, extracts and rehearsed readings for a members only audience. They give newer members experience of acting, directing, backstage work and also offer the chance to perform new writing or more experimental work.

The society also hosts regular **play readings** and **social events**.

New members are always welcome, and you don't need any experience to join. As well as acting, you could become involved with directing, production management, stage management, set and costume design or construction, co-ordinating properties or costumes, prompting, sound recording and operation, front of house management and publicity. If you are interested in joining, then please speak to a member of our friendly team. You can also contact us by email at publicity@leedsartscentre.org.uk or in writing to The Membership Secretary, Leeds Arts Centre, c/o Carriageworks Theatre, Millennium Square, Leeds LS2 3AD.

Leeds Arts Centre is run by a committee of members which is elected every year. We are a registered charity and are funded by the money we make from ticket sales, subscriptions and fund-raising activities.

Our members range in age from 18 to 80+ and we have a strong core of both younger and older members, who come from a wide range of backgrounds. To find out more, why not visit www.leedsartcentre.org.uk where you can complete an application form in the 'Join Us' section.



Welcome to Leeds Arts Centre's production of Blood and Ice

Director's Notes

200 years ago Mary Shelley completed her masterpiece, Frankenstein. What better time to bring Liz Lochhead's poetic and insightful play to life?

This play is a 'collage' of the works, letters and journals of Mary Shelley, Percy Bysshe Shelley, Lord Byron and Claire Claremont. There are several themes in the play as it touches on many different issues, some relevant specifically to the Romantic period and some equally relevant today. I feel the complexity of the writing makes you question the rights and wrongs of what is said and done.

For me, the overriding theme is 'creation' but in its widest definitions - scientifically, biologically, politically and artistically — how things are constructed from everything around us, and the fact that we are made from our experiences, and our experiences make us. In this play, creation encompasses so much, such as love, loss, parentage, birth and death, class struggles and the rights of women.

I hope in our production that you, the audience member, feel the various themes 'our Romantics' created - aided by the beautiful text, artwork and music - and that you decide what makes us. Our play has certainly been a collective creation. It's been a joy to direct, the cast have been so committed from the start and we've really enjoyed getting into the characters and discussing the many themes in the play.

The backstage team have been fantastic throughout, bringing the period to life aided by the artwork and music. I hope we have created a piece of theatre to be proud of and that you, the audience, will thoroughly enjoy.

Camilla Asher



Leeds Arts Centre Costume Hire

Leeds Arts Centre is a registered charity and non-profit making organisation. We have a wide range of high quality men's and women's costumes available to hire at competitive rates.

These include:

- Period costumes
- Character costumes
- Evening dress
- Military uniforms
- Suits
- Accessories

For more information, please see our website at
www.leedsartscentre.org.uk/costume-hire

Keep in touch!

To keep up with all the latest Leeds Arts Centre news follow us on:



[http://www.facebook.com/groups/
LeedsArtsCentre/](http://www.facebook.com/groups/LeedsArtsCentre/)

News and info



<http://twitter.com/#!/leedsartscentre/>

Updates on the go

Visit www.leedsartscentre.org.uk/



Biographies

Liz Lochhead - Writer



Photograph © Alastair Cook

Liz Lochhead was born in Motherwell in 1947. While studying Drawing and Painting at the Glasgow School of Art she began to write seriously. Her first book of poetry, *Memo for Spring*, was published in 1972 and sold 5,000 copies. Since her first full-length play *Blood and Ice* appeared in 1984, she has written numerous original plays and many adaptations from Molière, Chekhov, Euripides and Sophocles.

Her best known original plays include: *Mary Queen of Scots Got Her Head Chopped Off*, *Perfect Days* and the Saltire Society Scottish Book of the Year Award-winning *Medea* (Nick Hern, 2000). In 2005 Liz became Poet Laureate of Glasgow, and in 2011 she was appointed Scotland's Makar, succeeding Edwin Morgan. Liz was awarded the Queen's Gold Medal for Poetry in 2015 and is proud to be Honorary President of the Scottish Poetry Library.

Camilla Asher - Director



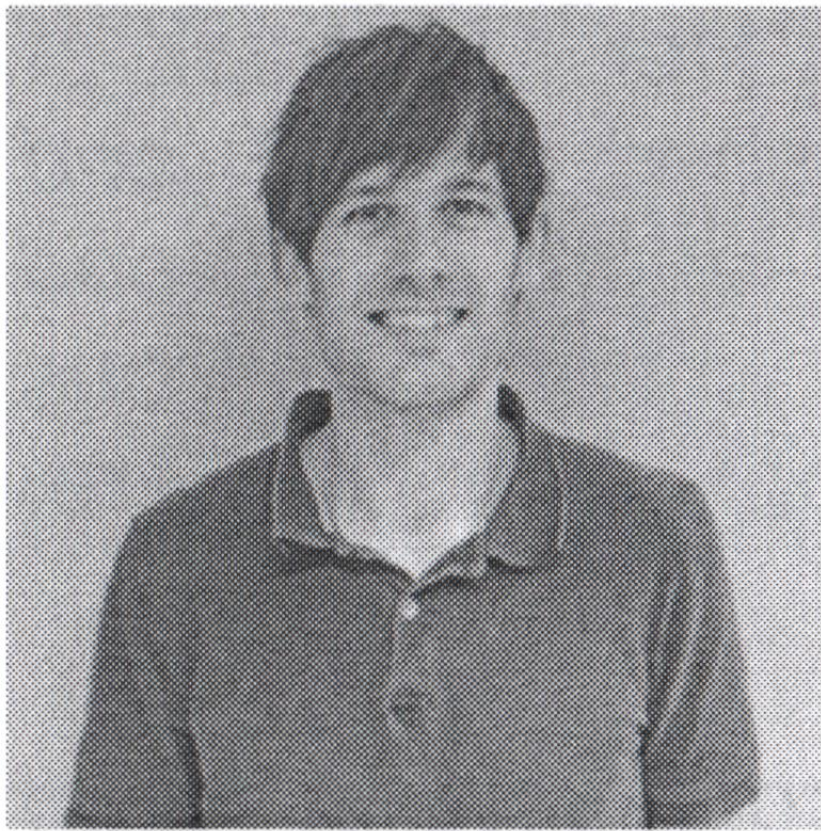
Camilla joined Leeds Arts Centre (LAC) 10 years ago and has been involved in all different aspects of production from acting, production management, stage management and directing. She first directed for LAC in February 2014 in the studio theatre with an original piece, *The Money's in the Bank* by Curth Flatow, translated by LAC member Alan Buttery.

In October of the same year, she directed her first main stage play, *Comic Potential* by Alan Ayckbourn. The directing bug had truly bitten! Camilla has also worked with other Leeds theatre companies such as Red Ladder, Curved Edge Theatre and Spud Theatre. Camilla would probably describe herself as a 'theatre junkie' and has enjoyed bringing creative practices to life in this production, as well as working with such a great team of creative people.



Cast Biographies

Percy Bysshe Shelley - Ben Hopwood



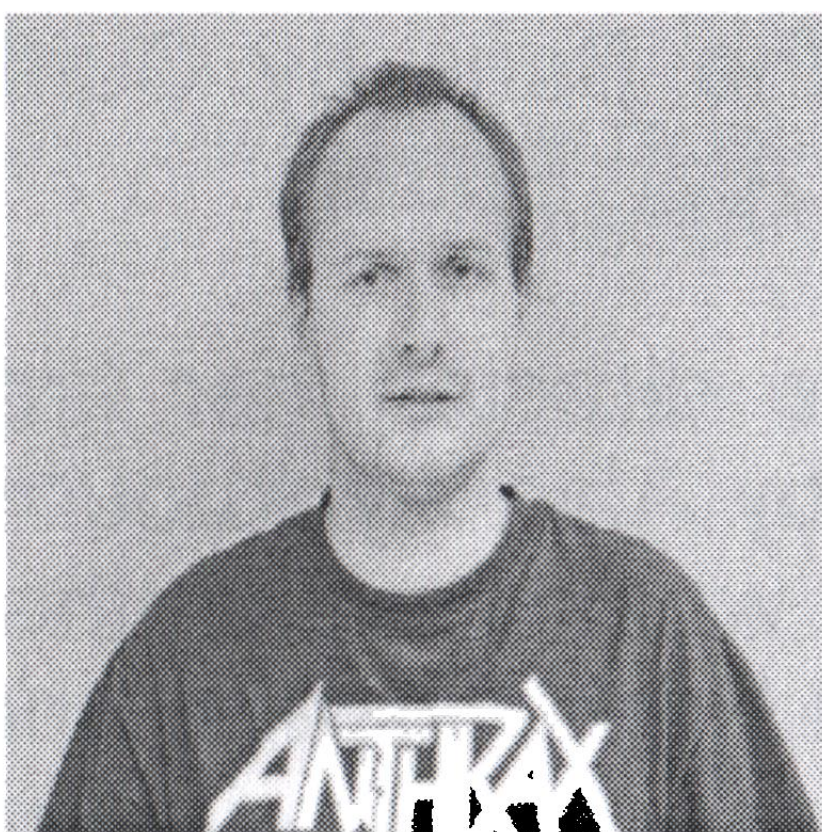
Ben joined the Leeds Arts Centre in 2013. He acted for the first time in LAC's production of "The Visit" and has appeared in, or assisted backstage with, six LAC productions since then, including "The Money's in the Bank" directed by Blood & Ice director; Camilla Asher. Ben also acted for LAC with the Royal Shakespeare Company in their touring production of A Midsummer Night's Dream, called 'Dream 16'.

Lord Bryon - Joe Saxon



Joe grew up in America and Switzerland, and says that the resulting identity crisis pushed him into acting. He has acted in 'The Crucible', and 'A Midsummer Night's Dream', and this is his third play with Leeds Arts Centre after appearances in 'Amazing Grace' and 'The Rose and Crown'.

Creature - Zack Jackson

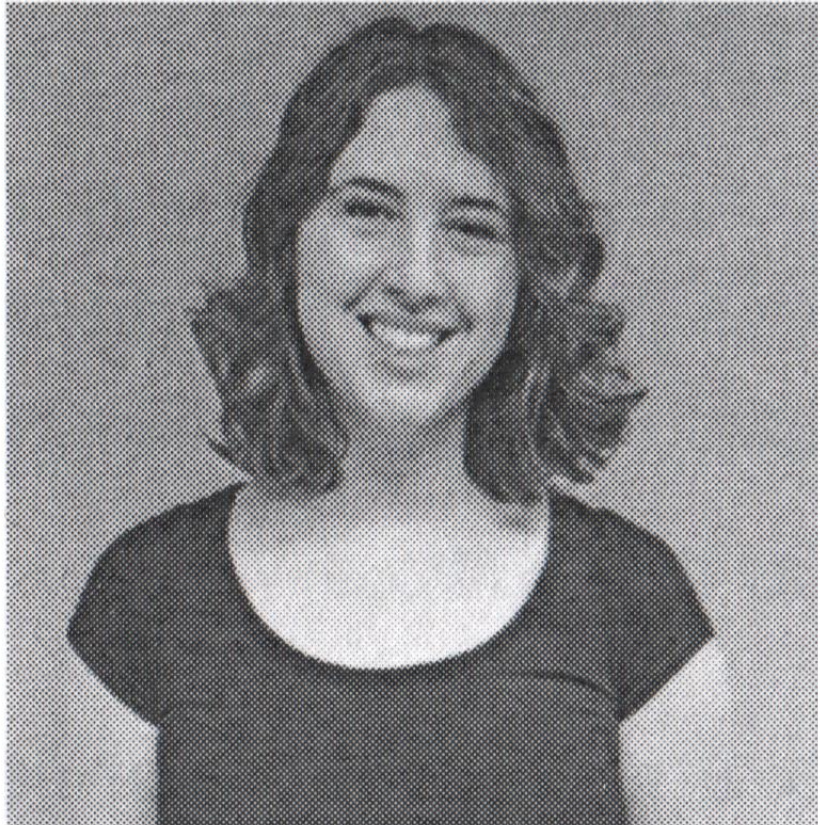


Zack has been has been a member of Leeds Arts Centre since 2009 and he has acted in numerous plays with the society including 'Road', 'Immaculate', 'Sense and Sensibility', 'The Birthday Party', 'Harvey' and 'Comic Potential' also directed by Camilla Asher.



Cast Biographies

Mary Shelley - Jessica Glanz



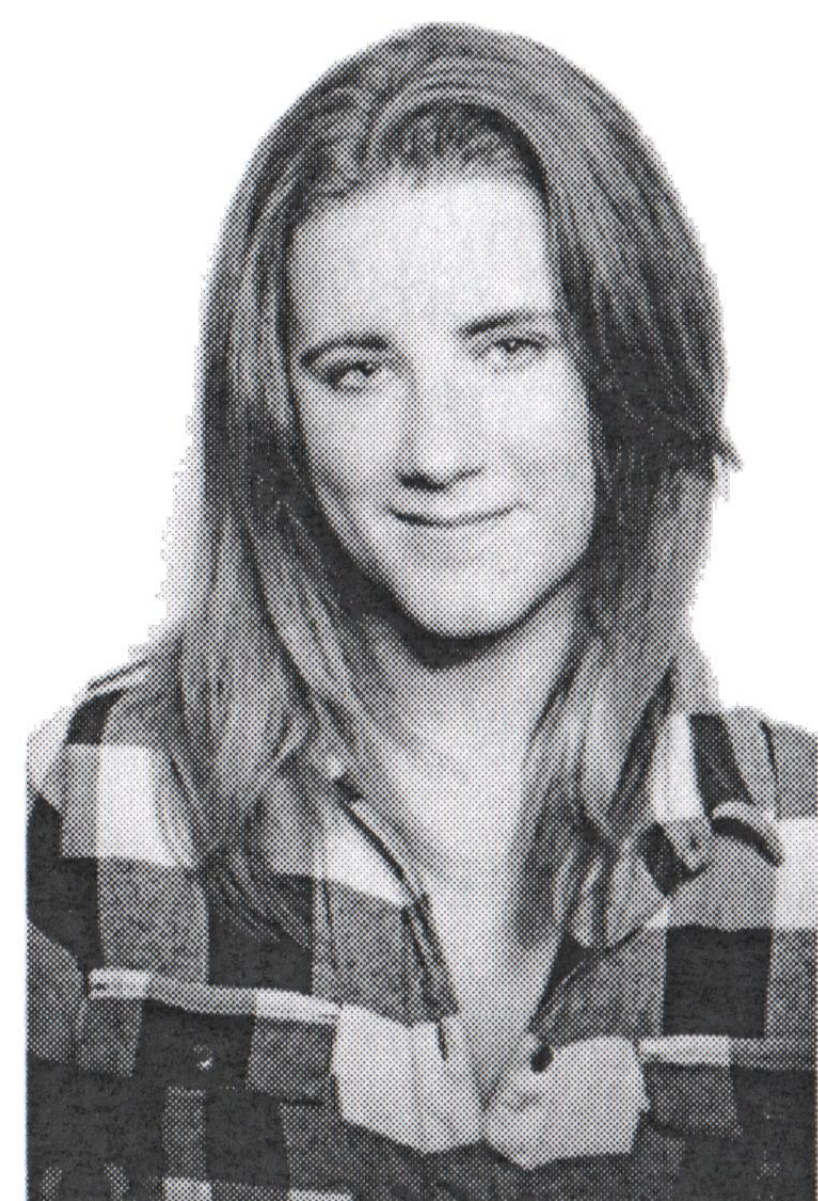
Jess joined Leeds Arts Centre in 2016, but has been acting as long as she can remember. This is her fifth production with the company, following Macbeth, Top Girls, and Intersections in Real Time, and After Midnight Before Dawn.

Claire Claremont - Hannah Jade Robbins



Hannah is a performer and poet based in Yorkshire. She currently works as an actor at the York Dungeon, portraying many historical characters. Hannah is a devoted performance poet and has worked as a poet coach at the West Yorkshire playhouse. She has also recently created her first solo spoken word theatre piece.

Elise (Maid) - Debbie Hair



Debbie joined Leeds Arts Centre in summer 2017. She has loved acting since being at school and is now looking forward to being involved in her first production with the company in '*Blood and Ice*'.



The Plot

Liz Lochhead, Scots Makar (National Poet for Scotland) from 2011-2016, tells the tale of the creation of the story of Frankenstein. The story unfolds as a series of flashbacks as Mary - widowed, disillusioned and let down by friends - struggles in later life to understand her own creation. A web of connections seems to spin between the desperate life of her 'creation', and her own life, beset by tragedy and misfortune. As Mary gets older, the story of Frankenstein reflects some of the deep sadness that afflicts her life and the lives of those around her, including Percy Shelley, Lord Byron and Claire Claremont.

However, it is not all darkness. Liz Lochhead's poetical style and barbed, subtle humour shine through to draw parallels between the turbulent post-Napoleonic Europe of 1816 and the political landscape of today, as well as digging deeply into a very human story of discovery and heartbreak.

We hope you enjoy watching another side to 'Frankenstein' in its 200th anniversary year!

Act 1

The play moves between different time periods, starting with Mary as a young widow back in England in the mid-to-late 1820's. She reflects on various phases of her life, beginning in 1816 in Geneva with the birth of her famed creation, Frankenstein, when she was 18.

Act 2

In Act 2 we travel with Mary through turbulent and difficult times, firstly back in England at the end of 1816. We then see her fleeing to Italy in 1819 and throughout the early 1820s, right up to the deaths of Shelley and Lord Byron in 1824. Her widowed self is always there seeking answers to questions she never thought she would ask!

The play is in 2 acts with an interval of 20 minutes

The video and / or audio recording of this performance by any means whatsoever is strictly prohibited



Cast

In order of appearance

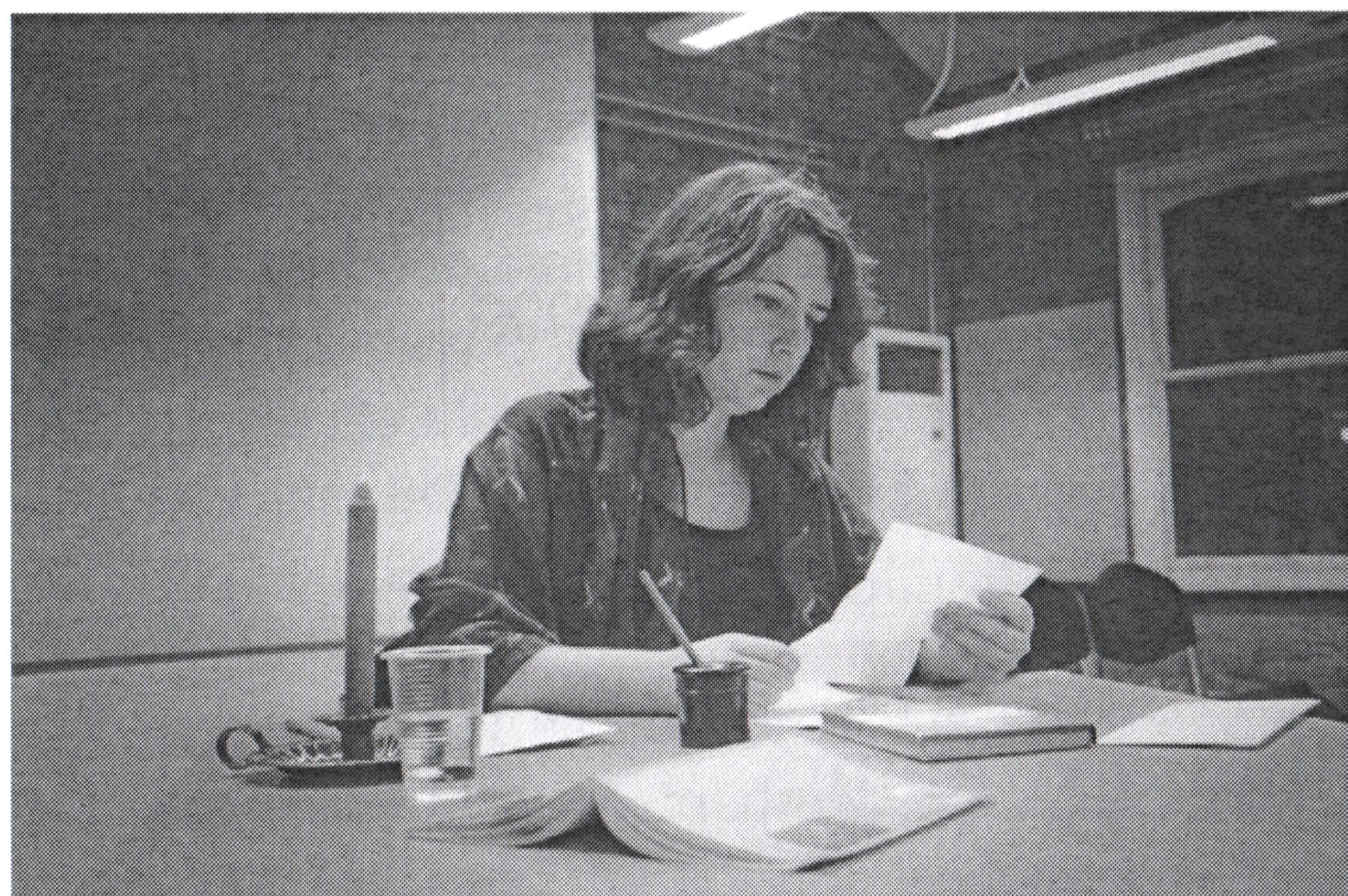
Mary Shelley	Jessica Glanz
Creature	Zack Jackson
Percy Bysshe Shelley	Ben Hopwood
Elise (maid)	Debbie Hair
Claire Claremont	Hannah Robbins
Lord Byron	Joe Saxon

Production Team

Director	Camilla Asher
Production Manager	Jenny Carter
Lighting Design	Tina Nutt
Music written & performed by	Daniel Asher
Sound Design and animation	Mitchell Perry
Set Creation	Pam Wilson, Margaret Savage, Maureen Willis, and Kathryn Francis
Set Furniture	Alan Buttery
Lighting & Sound Operation	Mitchell Perry
Properties	Ed Corbet, Denise Davies & Lucy Rowe
Wardrobe	Pam Wilson, Margaret Savage and Kathryn Francis
Rehearsal Prompts	Fiona Galloway and Enya Lucas
Front of House	Maureen Willis & LAC members

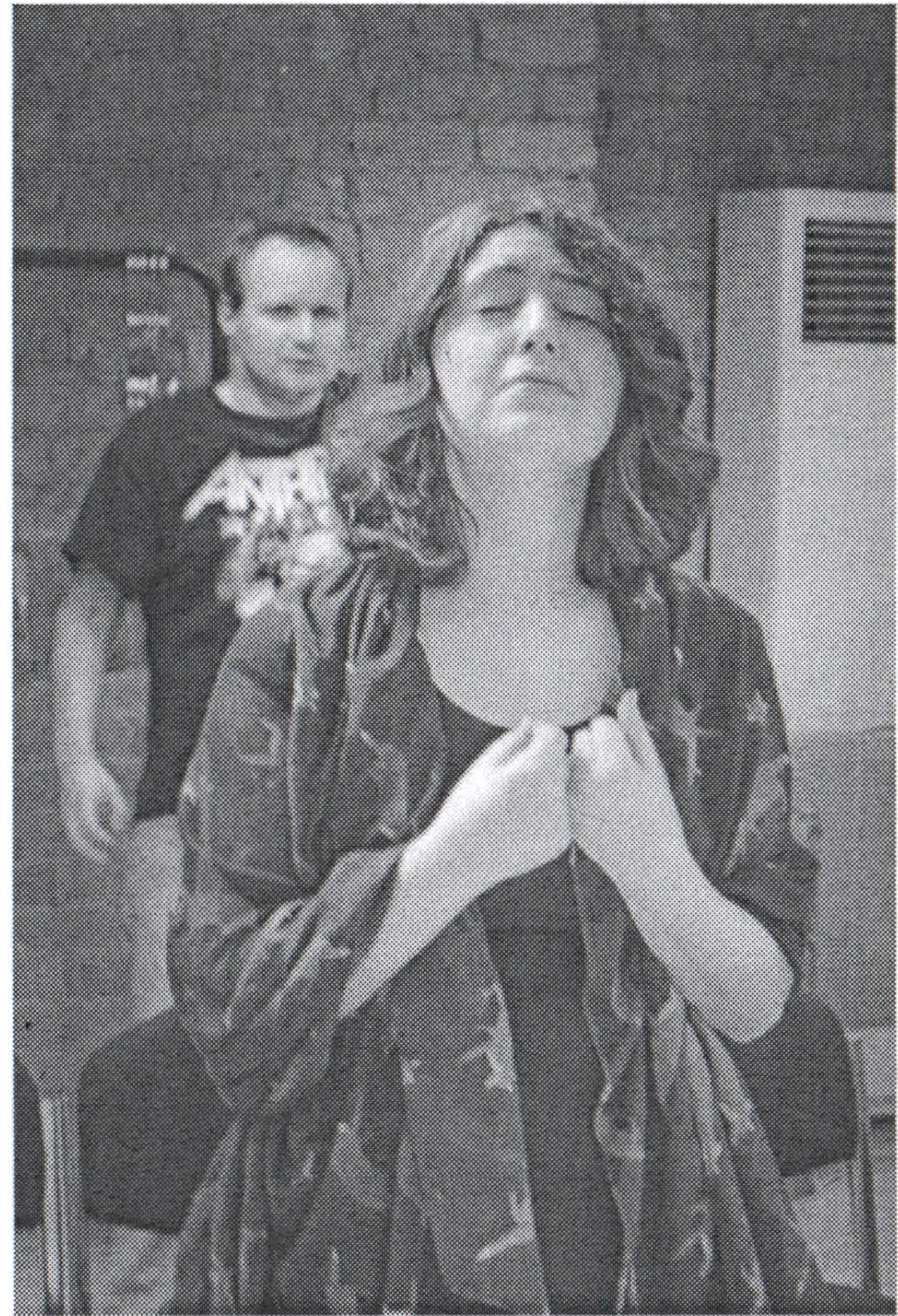
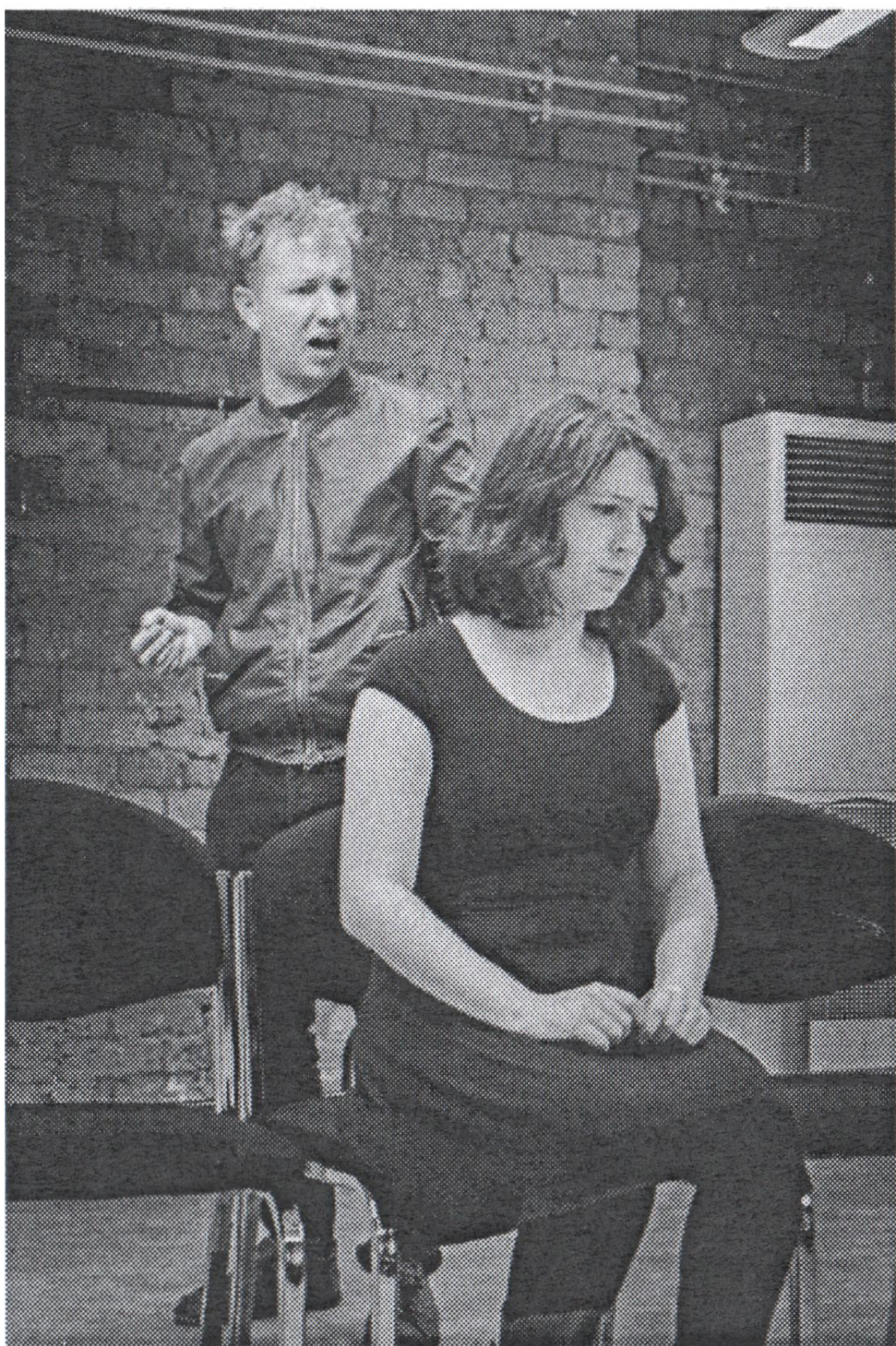


Rehearsal Photos

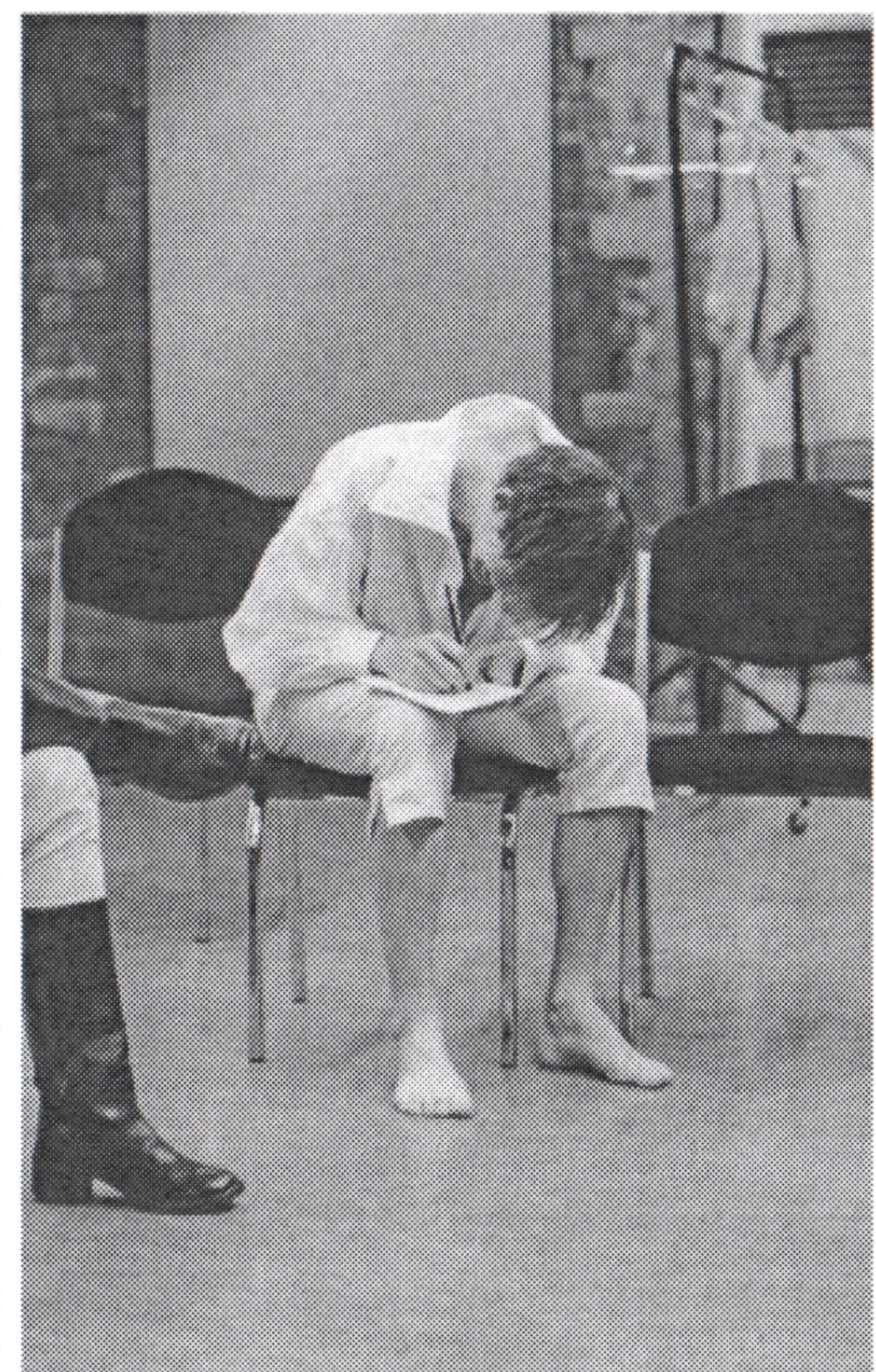




Rehearsal Photos

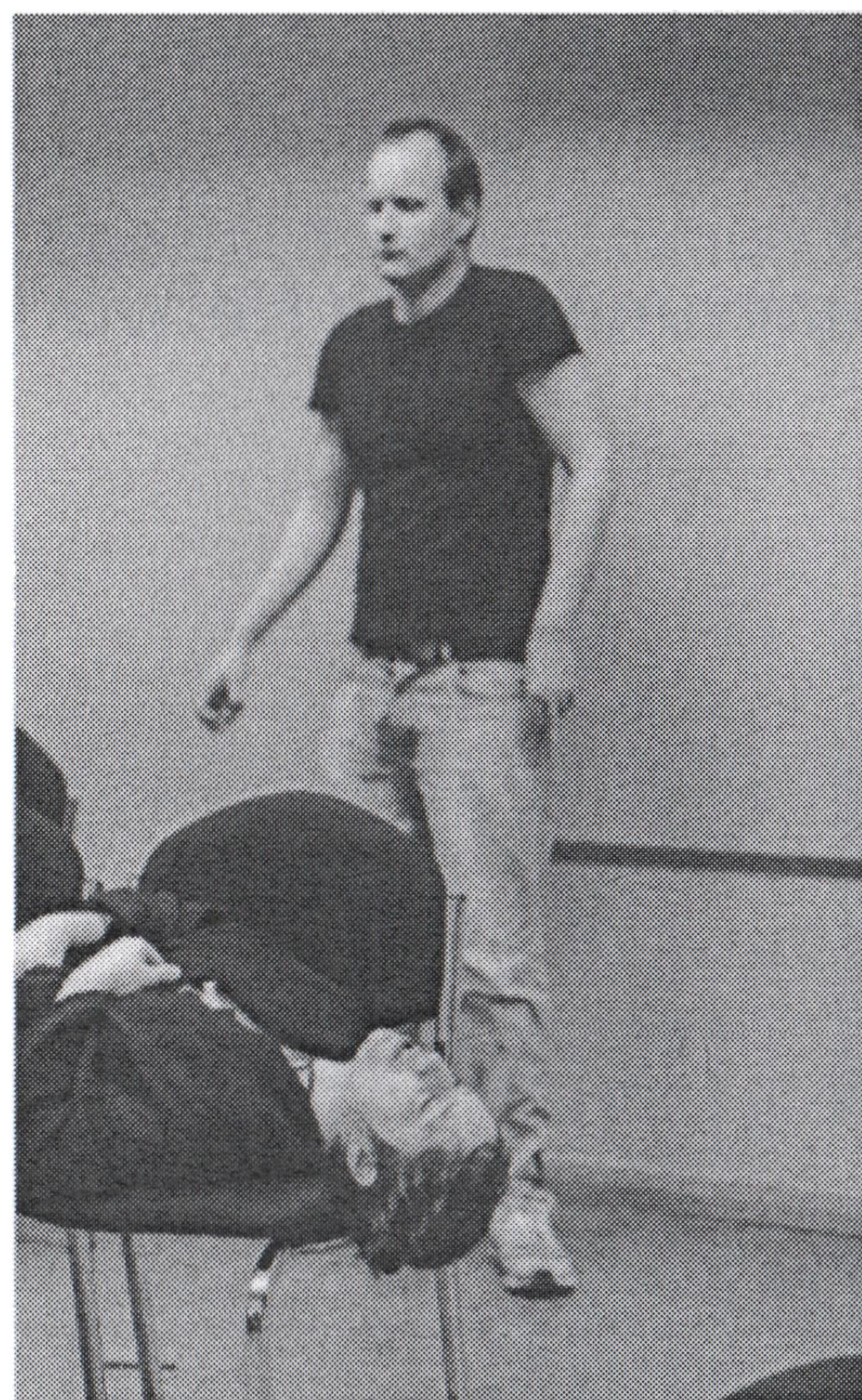


Rehearsal Photos





Rehearsal Photos



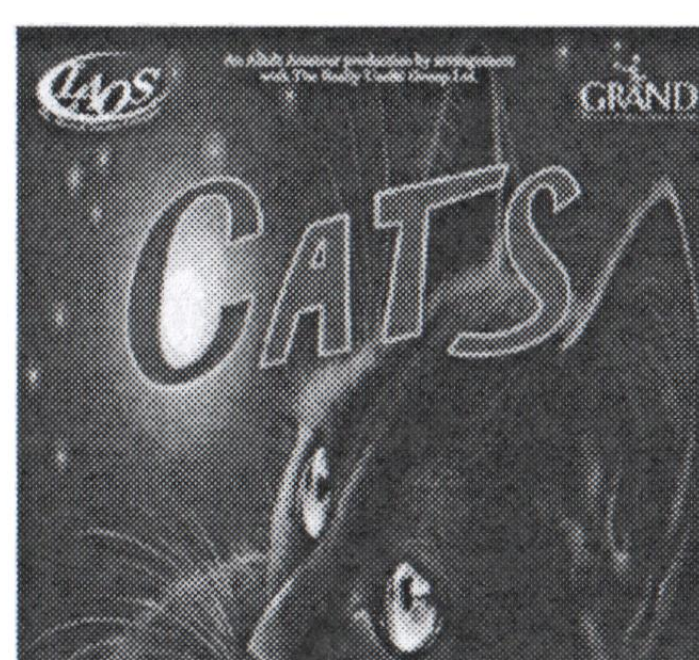
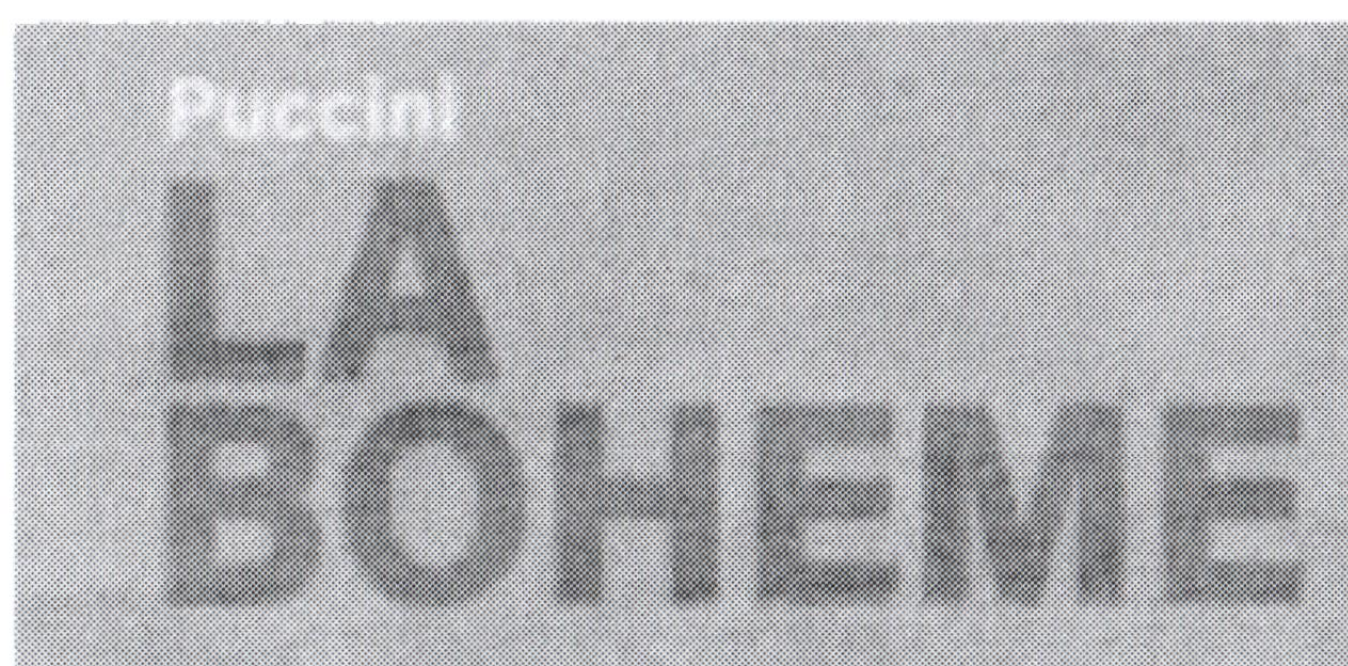
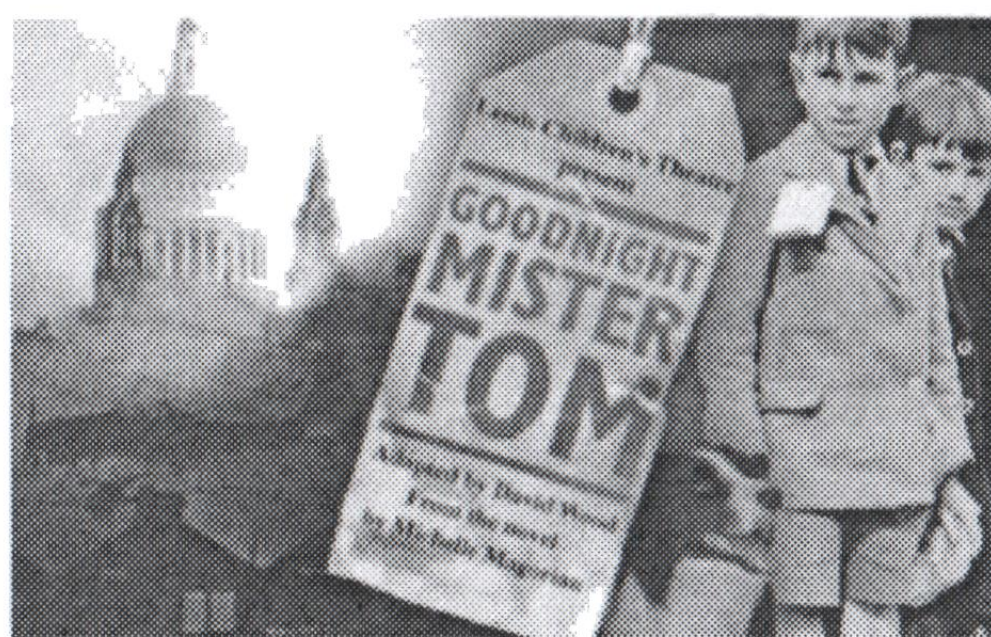
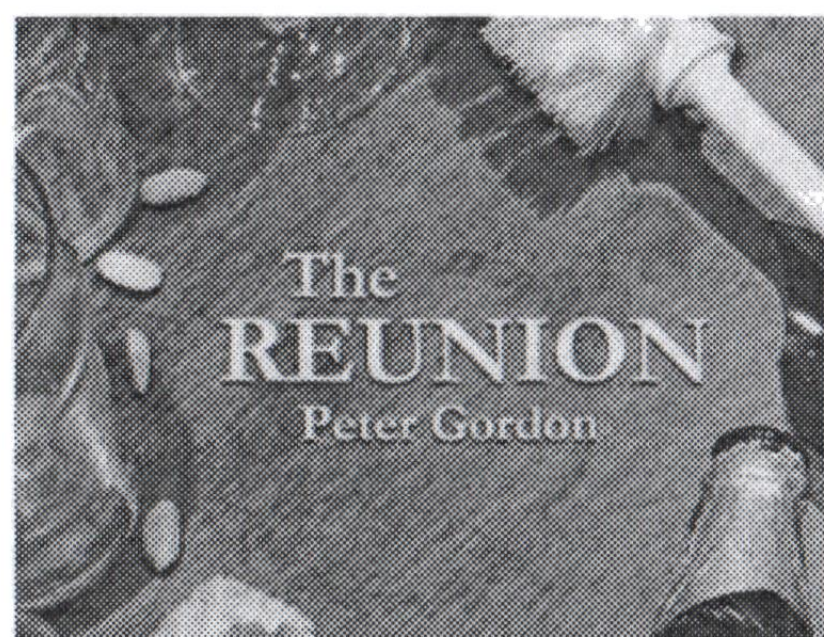
Photography by Mark Hillyer Photography



Leeds Community Arts Network (previously known as Leeds Civic Arts Guild) is the 'umbrella' association of various amateur drama, music, opera and arts societies who mainly meet and perform at the Carriageworks Theatre, Leeds. Each group has its own identity, however they all come together as part of the Network, working with Leeds City Council and the Carriageworks. The member societies are:-

Cosmopolitan Players (COS) – Leeds Amateur Operatic Society (LAOS)– Leeds Arts Centre (LAC)– Leeds Art Theatre in partnership with Spotlight Theatre Company – Leeds Children's Theatre (LCT)– Leeds Gilbert & Sullivan Society – Leeds Insurance Dramatic & Operatic Society (LIDOS) – Leeds Writers' Circle – Leeds Youth Opera (LYO) – Morley Amateur Operatic Society MAOS) – Shatterproof – S.T.A.R.S – St Mary's Youth Theatre – West Riding Opera.

More great upcoming shows from Leeds Community Arts Network Groups



The Reun-

ion (Stars) - 24th

- 28th October 2017, Ireland Wood Community Centre

Goodnight Mister Tom (LCT) – 15th – 18th November, The Carriageworks

Camp Rock the Musical (St Mary's Youth Theatre)- 23rd - 25th November, The Carriageworks

La Boheme (LYO) - 4th - 10th February 2018, The Carriageworks

CATS (LAOS) 17 - 21 April 2018, Leeds Grand Theatre



Acknowledgements

We are currently looking for companies and organisations that would benefit from advertising in our programmes or sponsoring our productions.



We would like to thank The Victoria Hotel for the use of their rooms. The Victoria Hotel is a favourite of the cast and crew, find us in there after the show.



Special thanks to Steve Beaumont Illustrations for the amazing design of the promotional poster and flyer



Thank you Mark Hillyer for taking photographs during the rehearsal

Lewis Francis Blackburn Bray
———— solicitors ————

14-16 Paradise Square Sheffield S1 2DE
0114 272 9721
www.lfbb solicitors.co.uk



Phil Dodgson & Partners Limited

Phil Dodgson & Partners are Pudsey based accountants offering services throughout West Yorkshire and surrounding areas. They are pleased to work with Leeds Arts Centre in the preparation of Leeds Arts Centres annual accounts.

49 Chapeltown, Pudsey, West Yorkshire, LS28 7RZ Tel: 0113 255 7406



Leeds Arts Centre's forthcoming productions are:-

Steel Magnolias by Robert Harling

Directed by Zoe Freedman

Thursday 1 Feb to Saturday 3 Feb 2018

The play (on which the well-known 1980s film is based) opens with discussion of Shelby's wedding day to her fiancé, Jackson. The play is set in the fictional north western Louisiana parish of Chinquapin, at Truvy's in-home beauty parlour, where the women regularly gather. It covers events over the next three years and shows how the women interact, at times with conflict, but in the end as resolved friends: Shelby's decision to have a child despite the complication that can result from her diabetes; Clairee's friendship with the curmudgeon Ouiser; Annelle's transformation from a shy, anxious newcomer in town to a good-time girl then repentant revival-tent Christian; and Truvy's relationships with the men in her family. Although the main storyline revolves around Shelby, her mother M'Lynn, and Shelby's medical battles, the underlying group friendship among all six women is prominent throughout the drama.

Far from the Madding Crowd

Adapted by Matthew White from the novel by Thomas Hardy

Directed by Maria Kwater

Thursday 3 May to Saturday 5 May 2018

Bathsheba Everdene, a wilful and independent young woman, inherits her uncle's farm. She is loved and pursued by three men: Gabriel Oak, her steady, loyal and practical shepherd; William Boldwood, a prosperous neighbouring farmer who is obsessed by Bathsheba; and the dashing, bewitching, but irresponsible Sergeant Troy, who has a dark secret in his past. Who will Bathsheba marry, and will it all be plain sailing after the wedding? This iconic tale (with well-known film versions) involves passion, intrigue, murder and earthy humour as we find out Bathsheba's fate.....

Charley's Aunt by Brandon Thomas

Directed by Dean Franklin

Thursday 12 July to Saturday 14 July 2018

This classic farce opens with Oxford students Jack and Charley planning to declare their love before their sweethearts' mean guardian whisks them off to the country and out of reach. After their intended chaperone, Charley's long lost aunt Donna Lucia d'Alvadorez, cancels her visit from Brazil, their only recourse is to persuade their chum Lord Fancourt to impersonate her. But when the girls' guardian and Jack's father catch the scent of Donna Lucia's millions, the web of lies gets stickier..

Tickets will be available from the City Centre Box Office at the Town Hall or by telephoning 0113 376 0318.