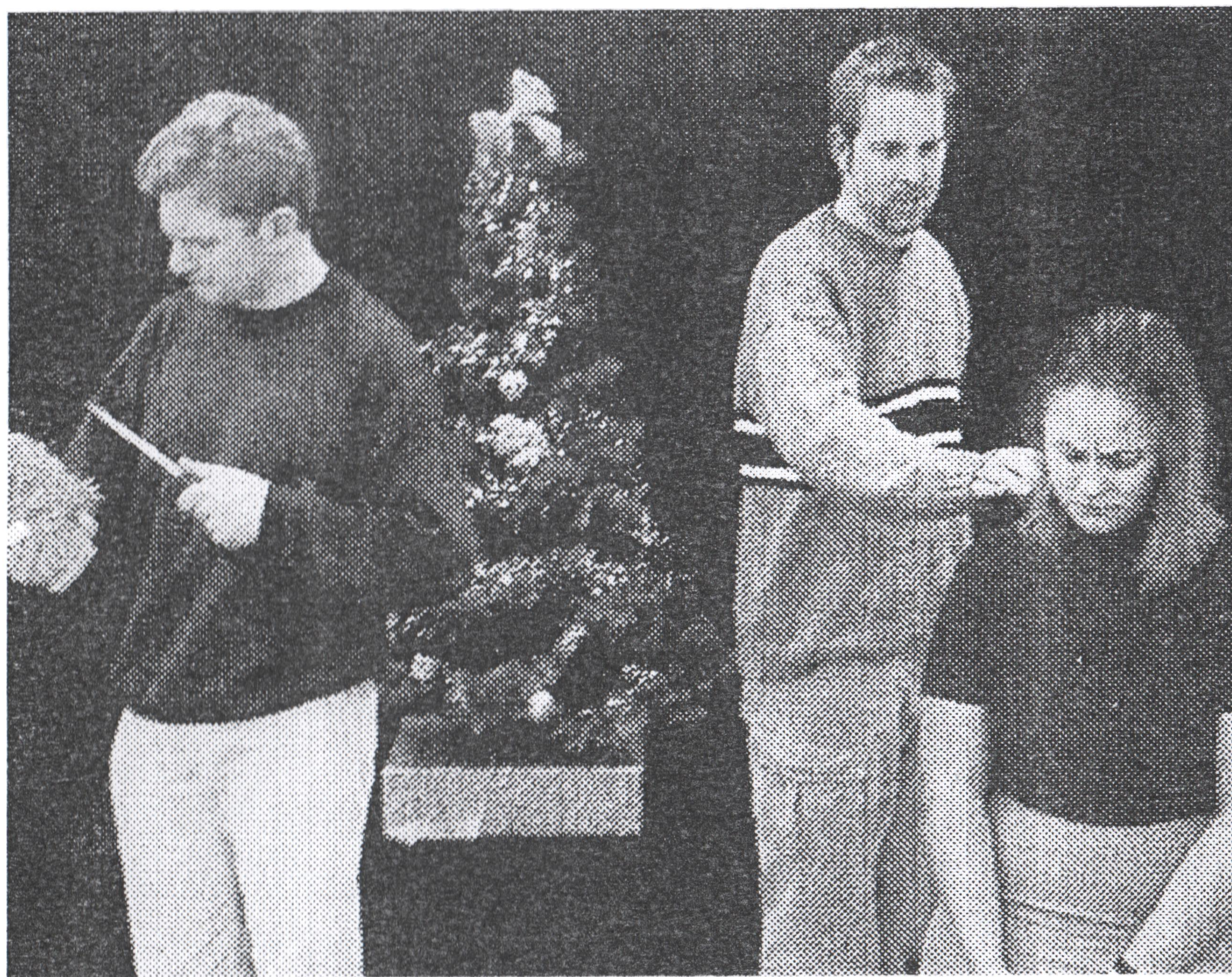




# LEEDS ARTS CENTRE

Presents

*Alan Ayckbourn's  
Season's Greetings*



*Leeds Civic Theatre*

*7<sup>th</sup> – 9<sup>th</sup> February, 2002*



# *Season's Greetings*

Season's Greetings is based on a couple celebrating Christmas with friends and family. Petty and not so petty, squabbles break out and Christmas presents are rifled.

The final climax, resulting from the arrival of the young writer, Clive leads to what appears to be a tragedy.

Hilarious highlights includes chaotically incompetent puppet show and a midnight love scene that ends by setting up a fearful din among several mechanical Christmas presents.

## **Ayckbourn, Sir Alan**

*Pronounced As: akbôrn* , 1939-, English playwright and director, b. London. One of Britain's most successful and prolific dramatists, he had his first play produced in 1959 and since then has written more than 50 works for the theatre. He is known for the wit and ingenuity with which he portrays the foibles and anxieties of England's suburban middle class and their conflicts with those in the social spheres above and below them. Since 1970, Ayckbourn has been artistic director of the Stephen Joseph Company in Scarborough, where he began his career, and he has taught at Oxford Univ. since 1992. His antibourgeois farces, many of which were also produced in the United States and a number of which have been televised, include *How the Other Half Loves* (1970); *Absurd Person Singular* (1973), *The Norman Conquests* (1974), a trilogy; *Bedroom Farce* (1975); *Season's Greetings* (1982); the darker *A Small Family Business* (1987); *Man of the Moment* (1990); *Communicating Doors* (1995); and *Things We Do for Love* (1998). Ayckbourn, who was knighted in 1997, has also written musicals and plays for children.

# ***Cast***

Neville  
Belinda, his wife  
Phyllis, his sister  
Harvey, his uncle  
Bernard, Phyllis's husband  
Rachel, Belinda's sister  
Eddie, Neville's friend  
Pattie, Eddie's wife  
Clive, Rachel's friend

Chris Hudson  
Louise Barson  
Shirley Broadbent  
Len Lumb  
Mark Haigh  
Amelia Walker  
Eddie Butler  
Donna Lisa Kitching  
Adam Booth

# ***Crew***

Production Co-ordinator

Stage Manager

ASMs

Set Design

Set Construction

Lighting

Sound Recording

Sound Operation

Prompt

Set Dressing

Properties

Puppet Design

Puppets & puppet theatre

Costume Supervision

Front of House Manager

Box Office

Mary Nelson

Rachel Morgan-Trimmer

Tom Bailey, Joy Lindley

Tony Nelson

The LAC team

Peter Waddicor

Jim Marshall

Dave Mallinson, Kathy McLean

Monica Brown, Marie Lindley

Doreen Parker & Denise Davies

Mary Nelson, Tony Nelson, John Davey,

Pam Wilson, Katy Cockcroft

David Burley

Margaret Savage and Bill King

Anne-Claude McDermid

Joyce King

Maggie Rhodes & team

## **Civic Theatre**

Theatre Manager

Assistant Manager

Chief Technician & Lighting Technicians

Catering (Crown Point Foods)

Box Office

Steven Carrtwright

Vivien Simpson

Peter Waddicor, Sandy Clark &

David Simpson

Shirley Tarran

Helen Richmond, Shirley

Shortall, Sylvia Gooding

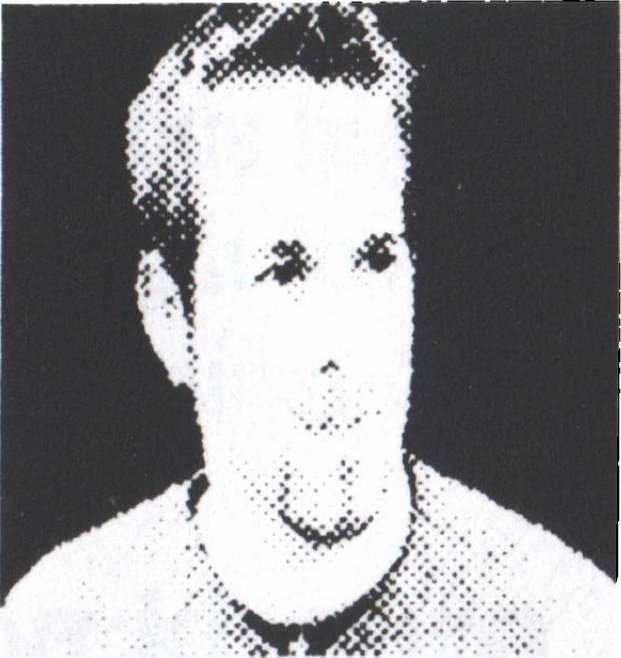


# Cast



## Louise Barson as Belinda

Louise has gained an O'Level in Drama and since then has acted a number of times including, Ophelia (Rozencrantz and Guildenstern), Christine (Masquerade) and Maria Marten (Murder in the red barn)



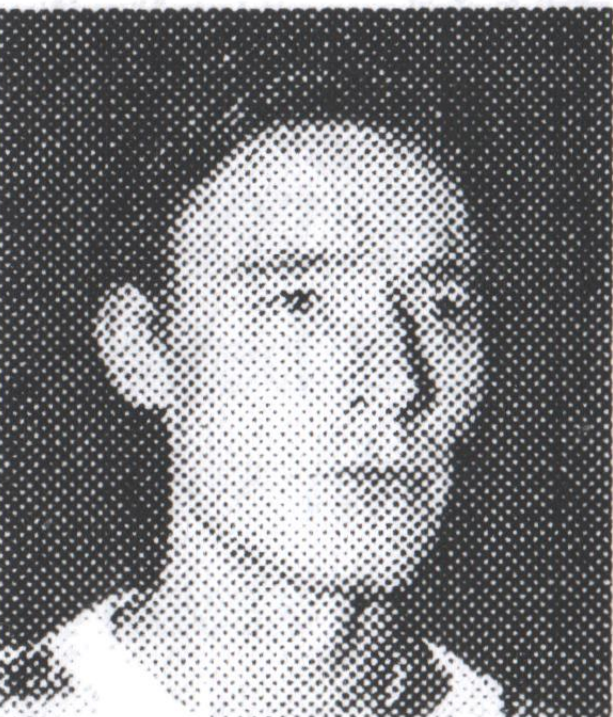
## Adam Booth as Clive

Adam has been acting for many years. Highlights include playing Hamlet, The Crucible and most recently Basil in "The Picture of Dorian Gray" Adam has recently been awarded a place at Drama school.



## Shirley Broadbent as Phyllis

Shirley's major role with the LAC is as the Secretary, she also fills in backstage and operates sound. Sometimes LAC lets her act too, most recently in "Arsenic & Old Lace", but her favourite role was as the witch in Terry Pratchett's "Wyrd Sisters"



## Eddie Butler as Eddie

Eddie began acting at the Civic Theatre in 1993. His debut role was as the constable in Dario Fo's Accidental Death of an Anarchist followed with Dracula (LAC), since then he has acted in numerous roles as well as directing his first play for the Bradford Studio.



## Margaret Davey – The Director

Margaret studied Drama at Yorkshire College of Music & Drama and has gained a LAMDA diploma in teaching & acting. She has run a drama group in Barcelona.

Although this is Margaret debut as director with the LAC she has been acting for 20 years since her debut in "The importance of being Ernest" by Oscar Wilde.



# Cast



## Mark Haigh as Bernard

Mark joined the LAC in October 2000, he has already has his leading debut as William Corder in Maria Marten (Cosmopolitan). He thoroughly enjoys acting and his ambition is to be in more plays.



## Chris Hudson as Neville

Season's Greetings is Chris' 30<sup>th</sup> play and his 5<sup>th</sup> on the Civic Theatre Stage. Most recently Chris played Dorian Gray in "The Picture of Dorian Gray". Having proved himself as a successful actor he will be turning his hand to directing Shakespeare's "The Taming of the Shrew".



## Donna Lisa Kitching as Pattie

Donna graduated in 2000 with a Drama/English Degree. She has been in a number of roles both on stage and in TV including playing Cassie in the Tyne Tees Television's Sugar and Spice. Donna currently works for AA Roadwatch doing travel bulletins for Stray & Alpha FM.



## Len Lumb as Harvey

Len has been a member of the Leeds Arts Centre for 4 years. He has had a lifelong interest in Theatre and Entertainment.

Len has recently appeared as Teddy in "Arsenic and Old Lace" as well as parts in Terry Pratchett productions.



## Amelia Walker as Rachel

This is Amelia's debut with the LAC. Before this production audiences may remember her from several Stellar performances in some world-renowned teenage productions in a Canadian High School.

When she is not on stage (like say, for the past 10 years) she is a (paid) Civil Servant & (unpaid) moral philosopher.



# ***Advertising or sponsoring Leeds Arts Centre Productions***

Leeds Arts Centre, part of the Civic Arts Guild, is a registered charity and non-profit making organisation.

We are currently looking for companies who would benefit from advertising in our programmes.

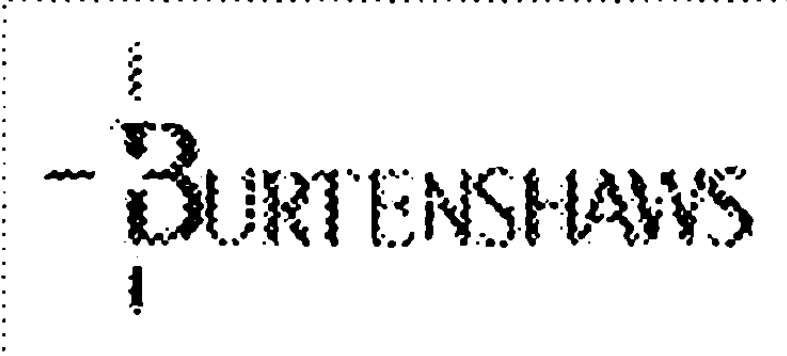
“All publicity is good publicity”, by advertising in our programmes, not only are you supporting your local arts group but you will also be distributing your business details straight into the hands of potential new business!

If you are reading this, so could your new customers!

Advertising prices start from £12.50 for 1/8<sup>th</sup> of a page to £50 for half an A5 page.

If you would like to advertise in our programme or sponsor our production of Shakespeare's “The Taming of the Shrew”, then please contact Angela Sparkes (Publicity Officer) on 07855 854306 or e-mail [LACSecretary@aol.com](mailto:LACSecretary@aol.com).

***The Leeds Arts Centre would like to take this opportunity to thank the sponsor of this production:***



***Burtenshaws Construction Consultants - 0113 244 3610***

In accordance with the requirements of the Licensing Sub-Committee of Leeds City Council:

- a) The public may leave at the end of the performance by all exits and entrance doors and such doors must at all times be open
- b) All gangways passages and staircases must be kept entirely free from chairs or any other obstruction
- c) Persons shall not be permitted to stand in any of the intersecting gangways, or stand in any other unseated space in the auditorium unless standing in such space has been specially allowed by the Licensing Sub-Committee. A notice is exhibited in that part of the auditorium in which standing has been sanctioned.
- d) The safety curtain must be lowered and raised once immediately before the commencement of each performance to show that it is in proper working condition



**Leeds Arts Centre** was formed in 1945 as an amateur society. Our members come from all walks of life and include people who have worked in the theatre, others who hope to make a career on the stage and quite a number who are very happy to remain amateurs. We're a friendly company, working together to maintain the high standards for which our productions are known. First and foremost we aim to enjoy ourselves.

Each year we produce plays at the Civic Theatre – but that's not all....

Our **Green Room** group devise plays, readings, quizzes and other entertainments to keep members not involved in current productions busy and to develop our skills in acting, directing and production.

Last, but not least, we enjoy a variety of other **social activities**, including theatre visits, outings, parties etc.

We welcome new members.....

....so if you are interested in:

**acting, directing, producing, set building & painting, making and repairing costumes back stage, front of house, publicity and promotion.**

Why not have a chat with one of our members front of house this evening or in the bar after the show. You can also write, with contact telephone number for further information to:

The Secretary, Leeds Arts Centre  
C/o The Civic Theatre, Millennium Square  
Leeds, LS2 8BH  
[www.leedsartscentre.org.uk](http://www.leedsartscentre.org.uk)

# ***Forthcoming Productions***

Wed 17<sup>th</sup> April – Sat 20<sup>th</sup> April 2002

## **An Inspector Calls**

By J B Priestley  
Directed by Joyce King

. W/c 10<sup>th</sup> June 2002

## **The Taming of the Shrew**

By William Shakespeare  
Directed by  
Marie Lindley and Chris Hudson

20,21 and 23<sup>rd</sup> February 2002

## **I Remember Mama**

By John van Druten  
Directed by  
Helen Cooper

**A Limelight Drama Group Production**

### **Friends of the Civic Theatre**

If you would like to support this theatre – why not join the friends.

Application forms available in the foyer