

**Civic**  
**THEATRE**



LEEDS LEISURE SERVICES

LEEDS ARTS CENTRE

*PRESENT*

**TAKING  
STEPS**

by

**ALAN AYCKBOURN**

**DIRECTED by JOYCE M. KING**

**Civic Theatre, Cookridge Street, Leeds LS2 8BH**  
**Box Office 462453 (9am to 5pm) 455505 (7pm to 8pm) Management 456343/434389**  
**Facilities for the Disabled**

# Civic THEATRE



# SUMMER

## Season 1984

### LEEDS LEISURE SERVICES

MONDAY 30th APRIL to SATURDAY 5th MAY at 7.00 p.m.

West Riding Opera

**OBERON**

by Weber

£3.50, £3, £2.50, £2. Reductions for Children and O.A.P.'s Monday to Thursday only.

WEDNESDAY 9th to SATURDAY 12th MAY at 7.30 p.m.

City of Leeds College  
of Music Opera Group

**CHRISTOPHER COLUMBUS**

by Offenbach

£2, £1.50, £1. Students/O.A.P. £1, 75p, 50p. Reductions for parties.

WEDNESDAY 16th to SATURDAY 19th MAY at 7.30 p.m.

Leeds Youth Opera

**L'ENFANT ET LES SORTILÈGES  
DOWN IN THE VALLEY**

by Ravel  
by Kurt Weil

£1.50, Child/O.A.P. 50p.

TUESDAY 22nd to SATURDAY 26th MAY at 7.30 p.m.

Leeds Art Theatre

**CELEBRATION**

by Keith Waterhouse  
and Willis Hall

£1.50, Child/O.A.P. £1. Concessions for party bookings. Two for the price of one on opening night.

TUESDAY 5th to SATURDAY 9th JUNE at 7.30 p.m.

Leeds Arts Centre

**CANTERBURY TALES**

by Chaucer

Adapted by Nevill Coghill and Martin Starkie. Music by Richard Hill and John Hawkins.

£2.50, Child/O.A.P. £2.

WEDNESDAY 13th to SATURDAY 16th JUNE at 7.30 p.m.

Proscenium Players

**THE SKIN OF OUR TEETH**

by Thornton Wilder

£1.75, Child/O.A.P. £1.50.

TUESDAY 19th to SATURDAY 23rd JUNE at 7.30 p.m.

Lidos

**LOVE FROM JUDY**

Book by Eric Maschwitz and Jean Webster. Music by Hugh Martin, lyrics by Hugh Martin and Jack Gray.

£2.50, Child/O.A.P. £1.50.

WEDNESDAY 27th to SATURDAY 30th JUNE at 7.30 p.m.

Cosmopolitan Players

**WHOSE LIFE IS IT ANYWAY**

by Brian Clark

£1.75, Child/O.A.P. £1.25.

#### SPECIAL ATTRACTIONS

SUNDAY 13th MAY

### THE THIRD JOSHUA TETLEY OPEN BRASS BAND CHAMPIONSHIPS

Fourth Section Contest commencing at 10.30 a.m.

All seats £1.

WEDNESDAY 30th MAY at 7.30 p.m.

Brentwood Promotions

**THE RICHARD TAUBER STORY**

starring Peter Firmani

From the same company who brought you "The Mario Lanza Story", another evening to remember!

£2, Child/O.A.P. £1.50.

FRIDAY 1st JUNE at 7.00 p.m.; SATURDAY 2nd JUNE at 3.00 p.m. and 7.00 p.m.

Valentine Hampshaw School of Dance

**SHOWTIME '84**

£1.25, CHILD/O.A.P. 75p.

★ ALL SEATS BOOKABLE AT THE TOURIST INFORMATION CENTRE • CALVERLEY STREET • LEEDS Tel 462453 ★

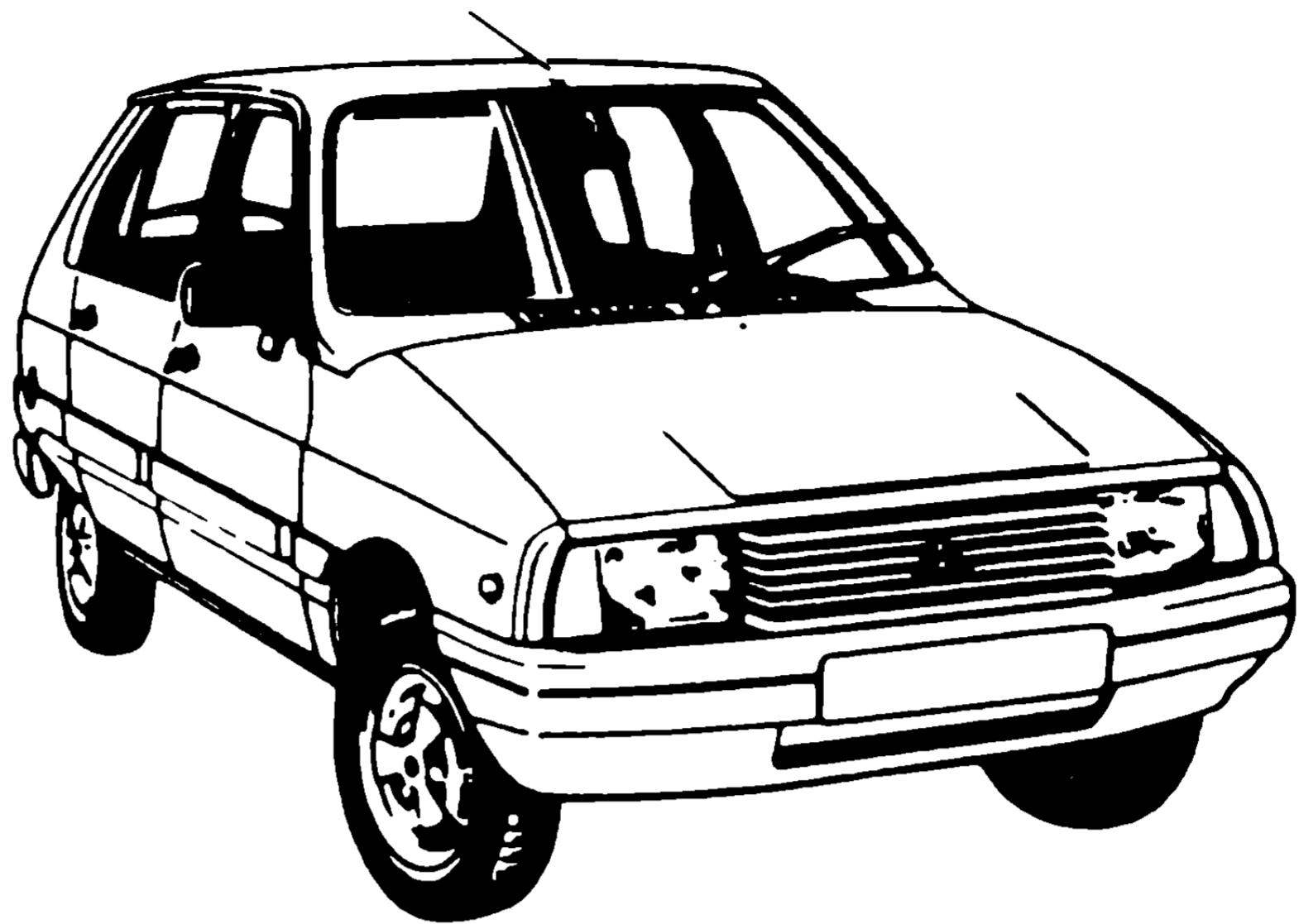
Civic Theatre, Cookridge Street, Leeds LS2 8BH

Box Office 462453 (9am to 5pm) 455505 (7pm to 8pm) Management 456343/434389

Facilities for the Disabled

# For a Good Deal Better

Peugeot  
Talbot  
Citroen  
Sales  
Service  
Parts



## COX OF LEEDS

Regent Street, Leeds 2

Telephone Leeds (0532) 431914



## Profile

Says  
**TRY US LAST!!**

WE WILL BEAT ANY GENUINE PRICE IN THE MONTHS OF DEC & JAN (On UPVC Windows, Doors & Patios, that will not rot, pit, fade, chip, warp and never need painting) — providing it complies with all fire safety regulations and conforms to the British Plastics Federation.

**AS ALL OUR PRODUCTS DO!!**  
*(If you tried us first you wouldn't have to do all this!!)*

## Window Profile

1, TAVERNERS WALK MID. EST. SHEEPSHAW GROVE,  
LEEDS LS7 1AM. TELEPHONE 457472

SHOWROOM OPEN 7 DAYS  
SUNDAY VIEWING 10 A.M. - 4 P.M. MON-SAT.

# Manfreds

## Italian restaurant

54 Wellington Street, Leeds 1

Tel: (0532) 436438

(HALF MINUTE FROM CITY SQUARE)

Manfred cordially invites you to celebrate in style after the show in cosy intimate surroundings, with courteous friendly service, and an extensive choice of freshly prepared food.

With your pleasure in mind.

LUNCH

12.00 - 2.00 Mon - Fri

EVENINGS

7.00 - 11.00 Mon - Sat

Open bank holiday Monday, evenings only

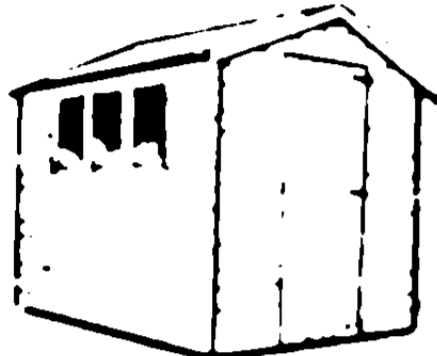
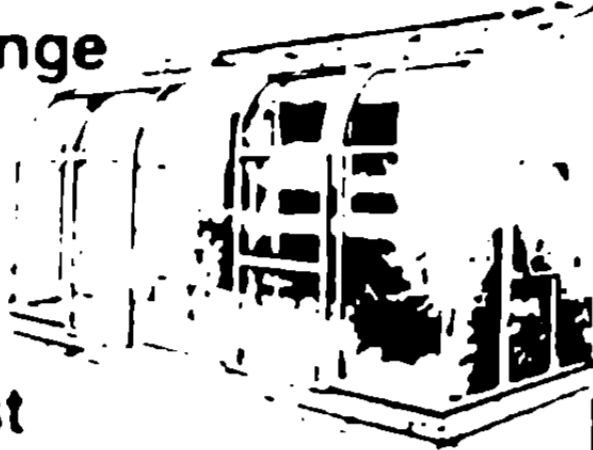
RESERVATIONS ADVISABLE

# VISIT.. NGS for Conservatories, Porches and Sheds

The biggest display in the North.

## Conservatories – Superb Range

Choose from most leading makes  
Home surveys without obligation  
Skilled installation planning and advice



## Sheds – High quality, low cost

Immediate FREE delivery and erection – with free floor. Our quality is guaranteed – our prices never undersold.



## Porches – Choice of sizes

High Quality glass and aluminium construction with life long appeal. Same day delivery and installation by experts.



NORTHERN GREENHOUSE SPECIALISTS

Saville Bros. Garden Centre  
Selby Road  
Garforth. Tel (0532) 861223

## It'll show you what a drag your present car is.

Imagine driving around with a parachute clamped to your rear bumper and you'll get an idea of what aerodynamic drag feels like.

Quite simply the less a car has holding it back the less fuel it needs to drive it forward. And the better its performance.

Imagine driving around with 100 lbs of extra weight and you'll get an idea of what the new Audi 100 feels like.

**Audi**

While the drag factor for the average car is 0.40, the Audi 100 clocks up a mere 0.30.



— TEST DRIVE THE NEW AUDI 100 —  
THE MOST AERODYNAMIC PRODUCTION CAR IN THE WORLD —

# Trust

Trust Motors  
(Leeds) Ltd.  
Gelderd Road, Leeds 12  
Tel: Leeds 633431

VAG Your Audi Volkswagen Dealer

## WEEKEND BREAKS

TAKING IN GREAT HIT SHOWS



FROM £58.00 – 3 DAYS

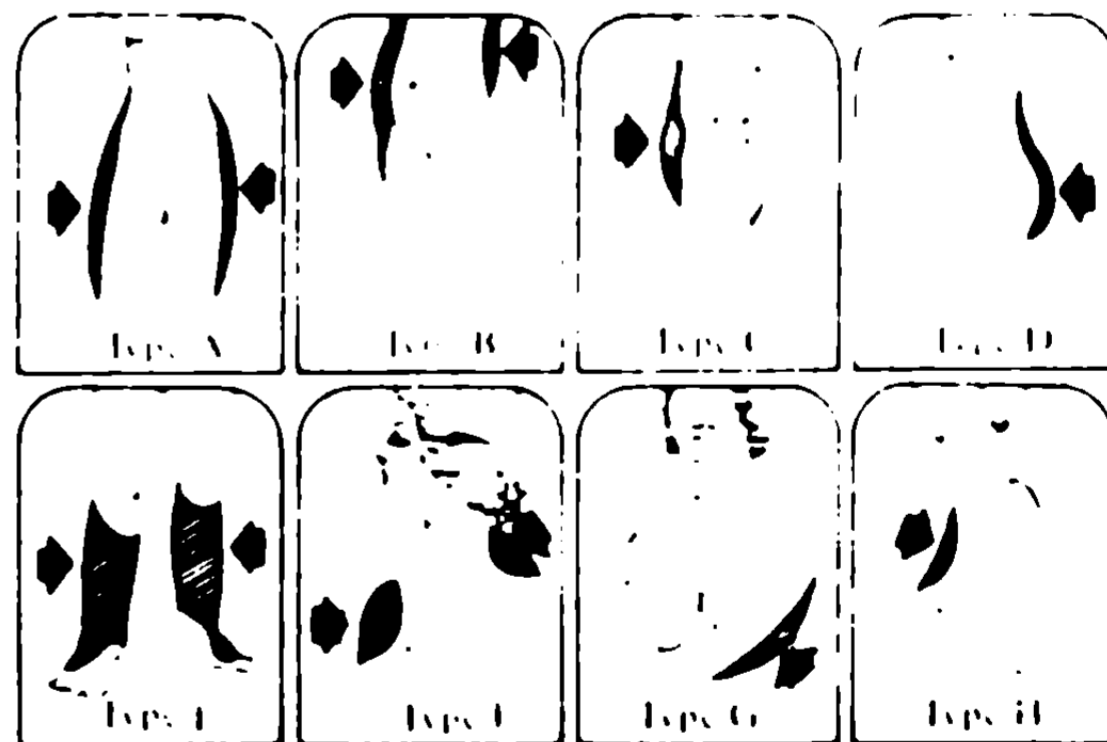
### INCLUDES:

- 2 nights accommodation in twin bedded room with private facilities and TV and full English Breakfast
- One a la carte dinner or lunch (3 courses)
- Sat theatre ticket from the selection offered each weekend
- Wallace Arnold luxury coach with video and toilet
- Sat a.m. tour of London
- Return from London Sunday p.m.
- The Prince of Wales on all departures. Deposit £10.00 at time of booking. Balance 6 weeks before departure. Theatre tickets subject to availability at time of booking.

## WA Wallace Arnold

53 Corn Exchange, Leeds 1. Tel (0532) 434691

## Women's Figure Problems



Take a critical look at yourself in the mirror. Which type do you belong to? TYPE A Fat cushions on upper thighs. TYPE B Heavy waistline. TYPE C Ugly fat on tummy. TYPE D Deformed bottom. TYPE E Thick ankles. TYPE F Heavy neck and shoulders. TYPE G Flabby upper arms. TYPE H Sagging bust. You will soon lose all your inhibitions.

**WE MAKE YOU THINNER GUARANTEED!**  
**OR YOUR MONEY BACK**

You don't simply become thinner, your figure is shaped according to your wishes. Take advantage of our free figure analysis.

## Swiss Figure Clinics

3rd Floor, Dursan House, 14, Dursan Street, Leeds 1 Telephone 438300  
Open Monday-Thursday, 10 a.m.-8 p.m.; Fridays 10 a.m.-4 p.m.  
Any patient of Swiss Figure Clinics U.K. is always welcome at any of our clinics in Switzerland, Zurich, Geneva, Lugano, Bern, Lucerne, etc.

LEEDS ARTS CENTRE

*PRESENT*

**TAKING  
STEPS**

by

**ALAN AYCKBOURN**

**DIRECTED by JOYCE M. KING**

# CRABBE & SON

Suppliers of dustbins, pedalbins and  
buckets to home and industry

*“For quality containers –  
contact CRABBES”.*

**Unit 7 Eastfield Trading Estate, Eastfield**

# **W. Bainbridge (Builders)**

*Over 100 years experience  
in the building trade.*

Specialists in conversions, extensions  
and modernisations.

**FREE ESTIMATE – Phone: 2841**

# AUTHOR'S NOTE

I have written very little true farce. Some of my comedies have touched on the farcical but *TAKING STEPS* is really my first since *HOW THE OTHER HALF LOVES*. It was written, like all my plays, for the Theatre in the Round at Scarborough. In this type of theatre, doors, the staple diet of most farces, are really impractical. So I've substituted floors instead. This is, I hope, a play you can enjoy on many levels at once . . .

Alan Ayckbourn  
Scarborough, January 1980

# TAKING

b.

ALAN AYCOCK

CA

Elizabeth

Mark

Tristram

Roland

Leslie

Kitty

Directed by – J.C.

The play is set in the attic, the  
linking stairs and passages

ACT I

F

ACT II

E

There will be one interval of fifteen minutes.



# STEPS

y

CKBOURN

ST

CHRISTINE WILSON

STUART MITCHELL

DAVID MALLINSON

ROGER COOK

DAVID JARRETT

JILL DOWSE

ROYCE M. KING

bedroom and lounge and the

passageways of "The Pines".

Friday Night.

Early Saturday Morning.

## Acknowledgements

Double bed kindly loaned by  
"Harrison Hand Built Beds", Westland Road, Leeds.



**CHRISTINE WILSON** (*Elizabeth*) last stepped onto the stage with Leeds Arts Centre as Sophie in "Ten Times Table" also by Alan Ayckbourn. A member for 20 years, Christine has appeared in numerous productions including "Spring and Port Wine", and "Rookery Nook". She lives in Swinnow with her husband, two children and Button the cat.



**STUART MITCHELL** (*Mark*) steps into his first part in an Ayckbourn play. His previous roles for the Centre include Bosola in "The Duchess of Malfi", The Mad Hatter in "Alice in Wonderland", Ferdinand in "The Tempest", and Malcolm in "Macbeth". Stuart lives in Rothwell with Theakston the beer-coloured cat and a wife, Julie.



**DAVID MALLINSON** (*Tristram*) last trod the boards as Ferdinand in "The Duchess of Malfi". He has also starred in "The Tempest" as Prospero, "Alice in Wonderland" as the Knave of Hearts and the White Knight and "Ten Times Table" as Donald. David lives in Headingley with his cat Lucy.



**ROGER COOK** (*Roland*) doesn't have a cat but he is no stranger to the work of Alan Ayckbourn. He appeared in "Ten Times Table" as Tim and has directed "Relatively Speaking". Roger, who lives in Pontefract, has been a Centre member for 12 years.



**DAVID JARRETT** (*Leslie*) first stepped out with Leeds Arts Centre last season as Quill in "Lock Up Your Daughters". He has since appeared as Trinculo in "The Tempest" and Delio in "The Duchess of Malfi". David also doesn't have a cat but his son has a goldfish.



**JILL DOWSE** (*Kitty*) did have a cat called Sundance which rode off into the sunset. Nevertheless she is taking on her first major role for the Centre. She previously appeared as the Eagle in "Alice in Wonderland", and last summer toured with the Manchester Youth Theatre. Jill will shortly be taking steps towards higher things when she goes to university in October.



**JOYCE KING** (*director*) hates cats but loves Alan Ayckbourn. She made her directing debut for the Centre with another Ayckbourn play, "Round and Round the Garden". Joyce is also an accomplished actress having appeared in many productions including "Barefoot in the Park", "Enter a Free Man", "Hay Fever", "Anthony and Cleopatra" and "Arsenic and Old Lace".

Stage Manager  
Assistant Stage Manager  
Properties  
"  
Prompt  
Lighting  
Sound  
Box Office Manager  
Front of House Manager  
Wardrobe  
  
Publicity

TREVOR MONEY  
ANNE ROBINSON  
DOREEN PARKER  
MARY NELSON  
DENISE SWIFT  
LAURIE BALL  
JIM MARSHALL  
MAGGIE RHODES  
BETTY TRIGGS  
MAGGIE RHODES  
  
JULIE MITCHELL

## Pick a Winner Every Time from Kitchens

fantastic musical selection

- Pianos ● Home Organs
- Keyboards
- Professional Instruments
- Group Gear
- Marching Band Instruments
- Sheet Music

Best Service, Best Value . . .  
the Everything in Music Store.

27-31 Queen Victoria Street, LEEDS LS1 6BD  
(Tel. Leeds 446341)

**Kitchens**  
EST 1875 THE MUSIC PEOPLE

## IT TAKES A GENIUS TO COOK STRAIGHT FROM THE FREEZER.



What do you call an oven that can defrost and cook in a single operation?

Or can be set to switch itself on up to ten hours in advance, then go

from cook to simmer automatically?

An oven that lets you do the cooking or does the cooking all by itself?

We call it the Genius. And it's just one of the outstanding range of microwave ovens from National.

For a personal introduction, just call in at the address below.

The Genius from

**National**

### MICRO - OVENS

Factory straight and most competitive prices.  
Best in range of Domestic Ovens.

231 EAST RUBY ROAD, LEEDS

0113 275 1111

TEL LEEDS 402745

## A.D.L. SUPPLIERS OF AIDS FOR THE DISABLED

Sole distributors for ELSWICK 'ENVOY' (the car you drive from your wheelchair)  
Suppliers of Powered and Manual Wheelchairs from all major manufacturers.  
Stair Lifts, Possum control, Car conversions, Wheelchair hire & repair. Visit our  
showroom and inspect the above plus a wide range of small aids for arthritic sufferers.



### AIDS FOR DAILY LIVING

UNITS 14-15 WOODSIDE MILLS LOW LANE HORSFORTH LEEDS LS18 4RL  
TEL LEEDS (0532) 588888



**With best wishes  
for a successful show**

# **J. PULLAN and SONS LTD.**

**Building Contractors  
LEEDS**

*YOUR LOCAL BUILDER SINCE 1885*



**DALTONA**  
SHELVING • INTER SIGNS • STORAGE HANDLING EQUIPMENT

**INTERSIGNS - The sign letters you can fix yourself -**  
Three dimensional letters moulded out of tough, durable acrylic based material. Range of styles and sizes. Immediate delivery ex-stock. Also CUT OUT PERSPEX LETTERS in many different styles. FREE ADVICE, DELIVERY AND FITTING SERVICE.

**DISTRIBUTORS FOR:**

TEBRAX Adjustable Aluminium Shelving  
SPUR Adjustable Steel Shelving  
STRUT Adjustable Steel Shelving  
ERECTO & DEXION Slotted Angle & Tube  
(Supplied and Erected)  
SYSTEM 2000 Display Fittings  
STRONGBEAM Quality Brackets  
MYERS Pegboard Fittings  
CONTI-BOARD Melamine Shelving

**ALL PRODUCTS EX-STOCK AND  
ON VIEW AT OUR SHOWROOMS**

**TEL: LEEDS 504878 / 501470**  
*Unit 5, Moorfield Industrial Estate, Yeasdon, Leeds LS19 7BN*

## **Act 1.**

Leap into the farce of a flashy advertising agency giving a mediocre service for extortionate prices.

## **Act 2.**

Enter Portfolio and work happily ever after.

**Portfolio**

THE PORTFOLIO ADVERTISING GROUP

241-253 New Road Side, Horsforth,  
Leeds LS18 4DR. Tel: (0532) 582353/584662.

☆ **SPECIAL ATTRACTION** ☆  
**Wednesday, 30th May at 7.30 p.m.**

Brentwood Promotions Present

*THE*  
**RICHARD**  
**LAUBER**  
*STORY*

*Featuring*

**PETER FIRMANI**

*Jackie Firmani Curley Carter*  
*Nigel Danford Richard Firmani*



**A NIGHT TO REMEMBER**

FROM THE SAME TEAM WHO BROUGHT YOU  
"THE MARIO LANZA STORY"—ANOTHER WONDERFUL EVENING OF  
MEMORABLE SONGS AND SUPERB SINGING.  
RE-LIVE THE LIFE AND MUSIC OF ONE OF THE GREATEST TENORS  
OF THE MUSICAL STAGE.

**TICKETS £2**

**CHILD / OAP £1.50**

**PARTIES OF TEN OR MORE—ONE FREE SEAT FOR EVERY TEN BOOKED!**

Special tea, if required, available to all party bookings at 6.45 p.m. at only £1.50 per head.

**ALL SEATS BOOKABLE AT THE TOURIST INFORMATION CENTRE,  
CALVERLEY STREET, LEEDS. TEL: 462453**

## **LEEDS CIVIC THEATRE**

Cookridge Street, Leeds LS2 8BH

Management 456343 - 434389

Box Office: 462453 (9 am to 5 pm) 455505 (7 pm to 8 pm)

GENERAL MANAGER & LICENSEE	: BRIAN GODDARD
ASSISTANT MANAGER/BAR MANAGER	: RICHARD PALMER
RESIDENT STAGE MANAGER	: ANTHONY McMANUS
DEPUTY STAGE MANAGER	: PAULINE MOWER
THEATRE ELECTRICIAN	: PETER WADDICOR

We hope you have enjoyed your visit to our theatre. If you would like to receive regular information about the theatre, please write to "The Mailing List", Leeds Civic Theatre, Cookridge Street, Leeds LS2 8BH. If you are interested in becoming a Patron or Sponsor for this theatre, please write to the General Manager, at the above address.

### **Disabled Facilities**

Leeds Civic Theatre can accommodate approximately 20 wheelchairs, if booked well in advance. Please ring 462453 for full details.

The Leeds Civic Theatre shares the Institute Buildings with the Leeds College of Music. This may mean that occasionally performances may be subject to slight acoustic problems. Whilst both parties do everything within their power to keep this to a minimum, we cannot prevent it completely. We apologise, therefore, for any inconvenience which may be caused.

In accordance with the requirements of the Licensing Sub-Committee of Leeds City Council.

- (a) The public may leave at the end of the performance by all exit and entrance doors, and such doors must at that time be open.
- (b) All gangways, passages and staircases must be kept entirely free from chairs or any other obstruction.
- (c) Persons shall not be permitted to stand or sit in any of the intersecting gangways, or stand in any unseated space in the auditorium, unless standing in such a space as has been specially allowed by the Licensing Committee. A notice is exhibited in that part of the auditorium in which standing has been sanctioned.
- (d) The safety curtain must be lowered and raised once immediately before the commencement of each performance so as to ensure it being in proper working order.

**PLEASE NOTE: THE TAKING OF PHOTOGRAPHS DURING  
PERFORMANCES IS PROHIBITED**

**STRICTLY NO SMOKING IN THE AUDITORIUM**

## **BAR SERVICE – THE INTERVAL**

To enable you to obtain your drinks efficiently and promptly, simply fill in the interval drinks order form (obtainable from the bar) and hand it into the bar before the performance. Your drinks will be ready for collection at the start of the interval. A wide selection of beers, wines, spirits, soft drinks, coffee, biscuits and confectionery is available. Save time – **ORDER IN ADVANCE**